



Instructions

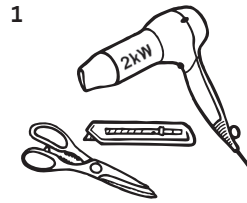
read completely before starting

Warning – when using a knife always cut well away from fingers. If in doubt, ask an adult to help.

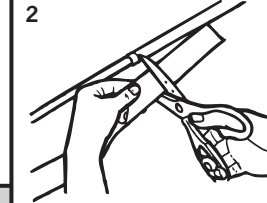
During application shaft will become hot!

Do not stop part way through heating process.

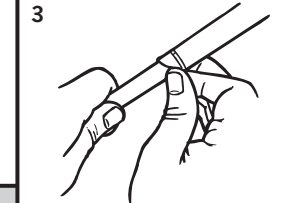
Shaft Skinz Ltd accept no responsibility for damage done to graphite shafts as a result of not following instructions.



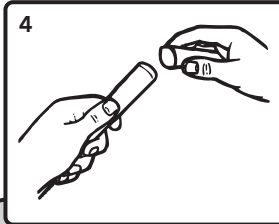
1
You need a 2kW hair dryer with nozzle, scissors and sharp knife. Lower wattage will increase application time (1875W min).



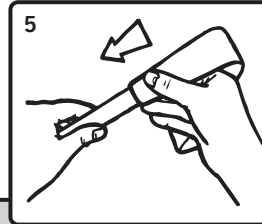
2
Cut sleeve to length of visible shaft. (Don't worry - sleeve will stretch slightly during heating).



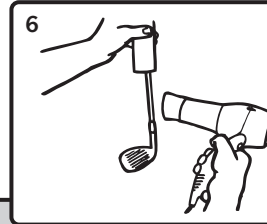
3
If possible, flip end of grip back so it stays in position. If not possible, trim sleeve to end of grip in point 12.



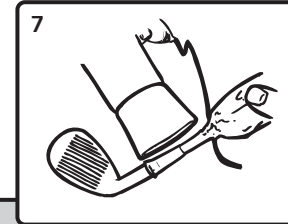
4
Place 'sleeve aid' over butt of grip.



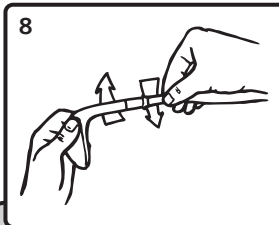
5
Feed sleeve over grip and pull half way down grip in preparation for heating.



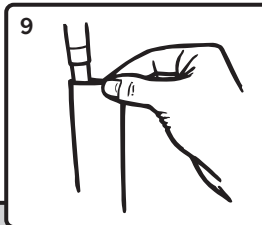
6
Heat bottom third of shaft until hot (graphite will take longer). Then pull sleeve down to cover ferrule and **overlap top of hosel**.



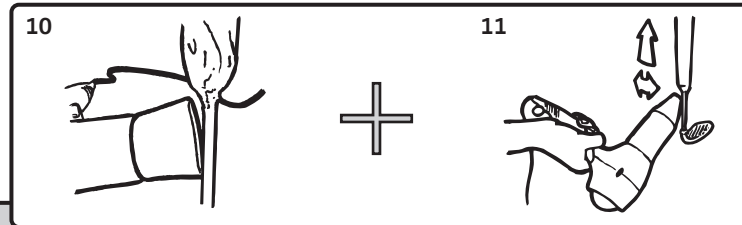
7
With nozzle almost touching shaft, heat all around first few centimetres of sleeve to achieve tight fit.



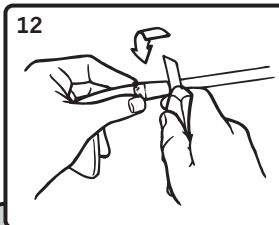
8
If desired, quickly twist any obvious seam to back of shaft and away from club face.



9
IMPORTANT - From now on, to keep sleeve taut, support club's weight by holding top of sleeve. Club should hang freely.



10 + **11**
VERY IMPORTANT - Shrink only a few centimetres at a time by aligning nozzle to shaft and heating all around (lower edge of nozzle should touch shaft to force heat out top edge). Move up **only** when all creases have been removed. (Tip: heat opposite side from creases to pull smooth). Stop when sleeve shrinks onto beginning of grip.

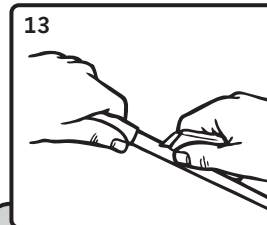


12
Run sharp knife all around sleeve at ferrule and cut away excess. Repeat at grip end and return grip to original position.

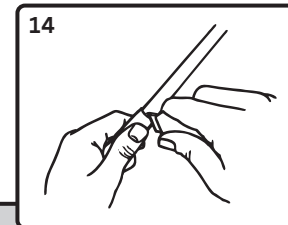
You can extend the life of your Shaft Skinz™ by placing clubs in your bag gently. Never force clubs downwards or you risk damaging the sleeves.

Shaft Skinz™ are designed to bear the brunt of everyday knocks and scrapes and so look best if replaced often.

Check www.shaftskinz.com regularly for the most up-to-date designs.



13
To remove from STEEL SHAFT simply run sharp knife down length of sleeve and lift off.



14
To remove from GRAPHITE SHAFT cut away from shaft to start then peel off. **DO NOT CUT DIRECTLY ON SHAFT.**